

## 5. Access the radio terminals via Ethernet



1. Confirm that your PC has the following software installed:

- Java VM
- Mozilla Firefox, or Microsoft Internet Explorer web browser

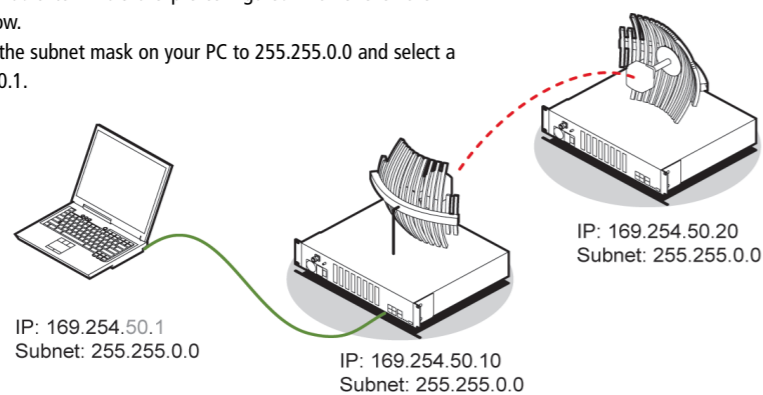
If necessary, install this software from the CD supplied.

### IMPORTANT

In order to communicate via Ethernet, each piece of equipment must have compatible IP addresses on the same subnet. The radio terminals are pre-configured with one of the IP addresses and the subnet shown below.

To connect to the radio terminal, set the subnet mask on your PC to 255.255.0.0 and select a compatible IP address e.g. 169.254.50.1.

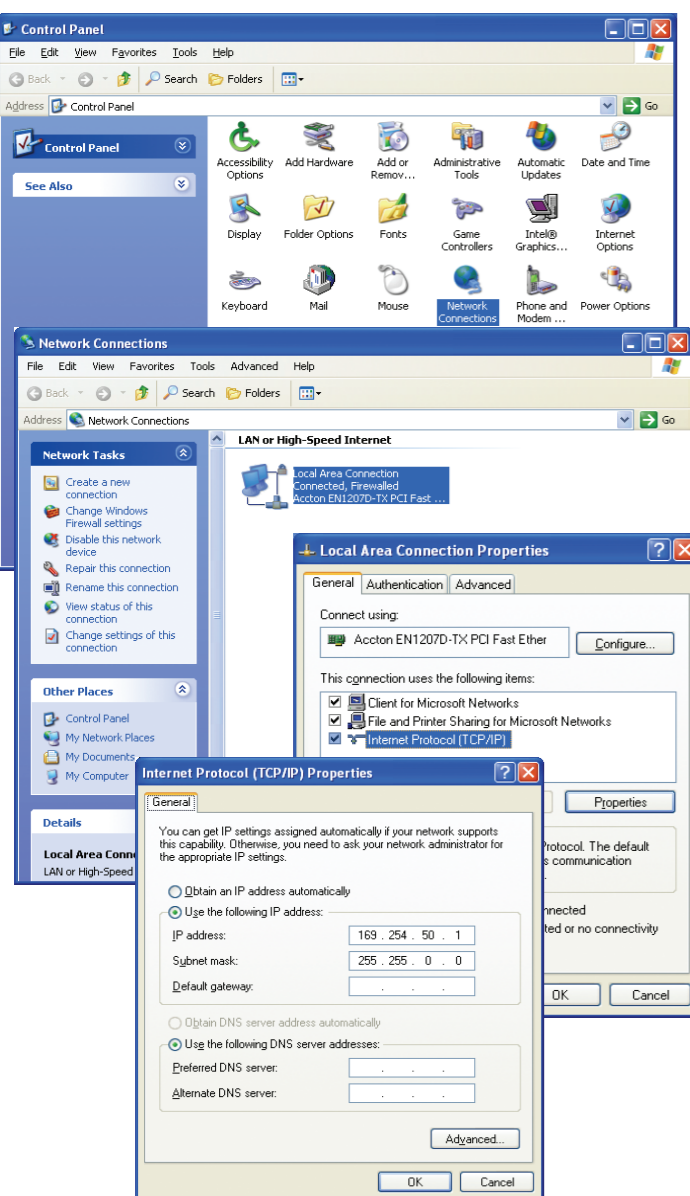
Subnet			
255	255	0	0
169	254	50	20
169	254	50	10
169	254	50	1
IP addresses			



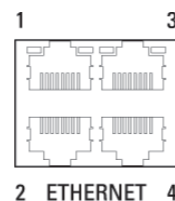
To setup the IP addresses on your PC, open the Windows Control Panel > Network Connections and right click on your Local Area Connection (primary network connection).

Select Properties > Internet Protocol (TCP/IP) and click Properties.

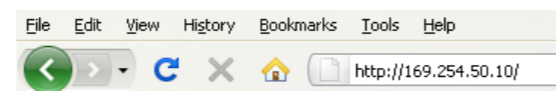
In the Internet Protocol (TCP/IP) Properties window, set up your PC IP address and Subnet mask as shown below.



2. Using the Ethernet cable, connect the PC's Ethernet port to one of the radio terminal's Ethernet ports.



3. Start your web browser and in the address field, enter the radio terminal's IP address.



The following screen should open from which you can login to the radio terminal.



You are now ready to start configuring your radio link.

Please refer to the Aprisa XE User Manual (supplied on the CD) for details on how to change settings and optimise the performance of your Aprisa XE link.

If the above screen does not open, refer to the Aprisa XE User Manual and follow the steps in the 'Managing the Terminal' section titled 'Changing the Terminal's IP Address'.

# Aprisa XE



# Quick Start Guide

## Contents

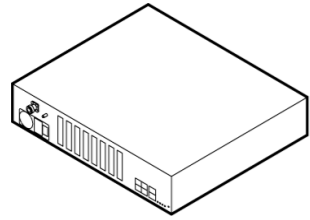
Follow these steps to install and access your Aprisa XE radio link:

1. Check the box contents
2. Verify you have all the required tools
3. Install the radio terminals
4. Apply power to the radio terminals
5. Access the radio terminals via Ethernet

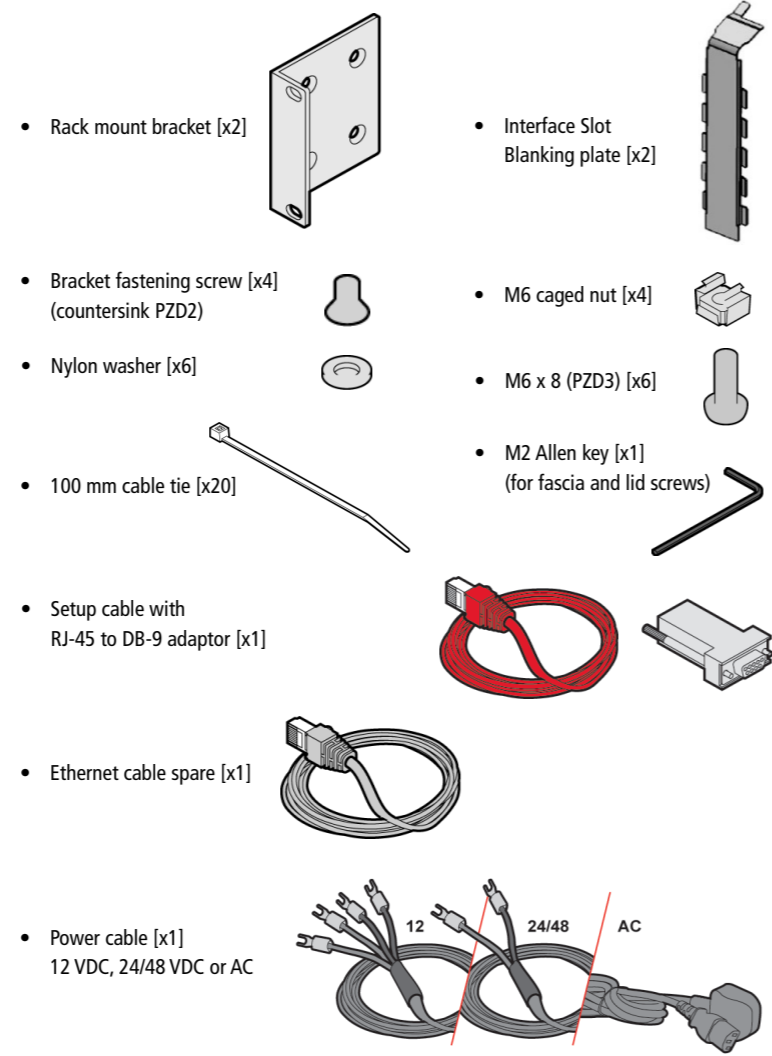
# 1. Check the box contents

Each Aprisa XE radio is shipped to you in a single box containing the following items:

Aprisa XE Radio [x1]

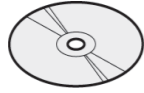


Accessory kit [x1] containing the following:



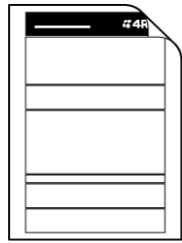
Information and setup CD [x1] including the following:

- Radio Terminal software
- Cross Connections application
- Mozilla Firefox web browser
- Microsoft® Internet Explorer web browser
- 4RF Surveyor path propagation calculator
- Java™ VM software
- TFTP server software
- Aprisa XE Datasheet, Product Description and User Manual
- Brochures, Case Studies, White Papers, Software Release Notes
- Adobe® Reader® software (for viewing the PDF files on the CD)



Configuration Sheet [x1]

Commissioning Form [x1]



# 2. Verify you have the required tools

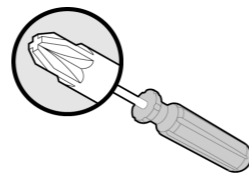
You will need the following additional equipment:

Personal computer (PC) with the following minimum requirements:

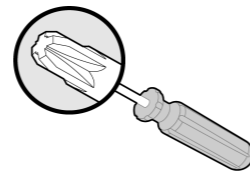
- 800 MHz Intel® Pentium III processor
- 200 MB of free hard disk space
- CD ROM drive
- Either a COM port or USB port (with the DB-9 serial to USB adaptor)
- Ethernet interface
- Microsoft Windows® 2000, XP or later
- Java™ VM software v1.6 or later
- Microsoft® Internet Explorer or Mozilla Firefox web browser



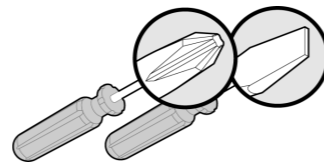
A pozidrive screwdriver (PZD2)



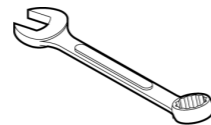
A pozidrive screwdriver (PZD3)



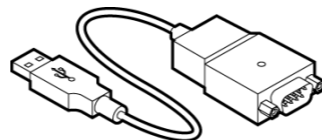
A Philips (size 2) OR flat-blade screwdriver (5 mm)



An 8 mm spanner



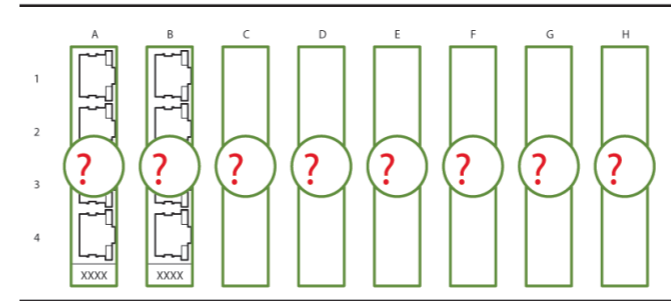
A DB-9 serial to USB adaptor



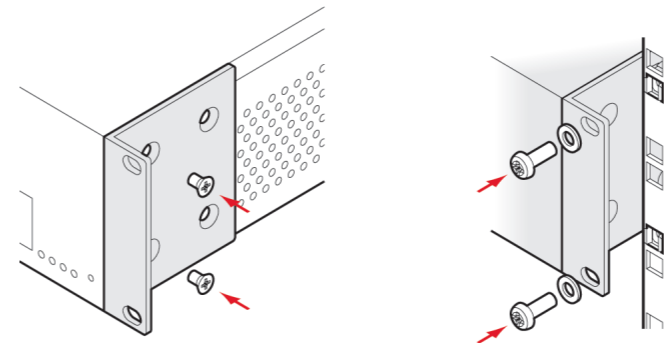
This adaptor will only be required if you wish to connect to the Aprisa XE SETUP port and the PC does not have a serial COM port (DB-9).

# 3. Install the radio terminals

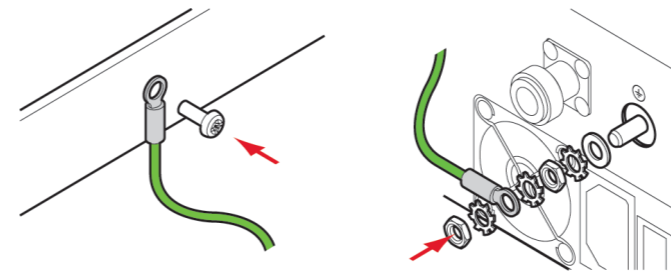
1. Confirm that the correct interface cards are fitted.



2. Fasten the mounting brackets to the radio terminal and mount it in the rack

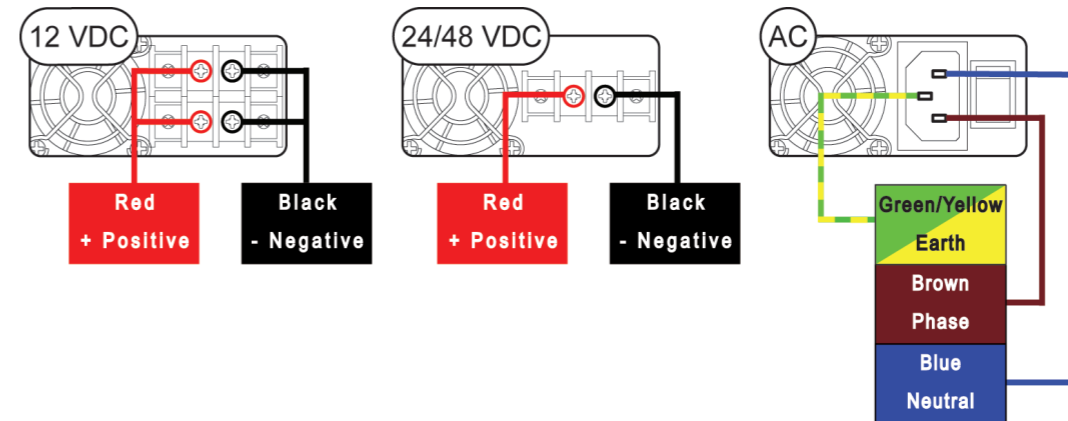


3. Connect the radio terminal's earth stud to the rack with the Earth cable using the 8 mm spanner



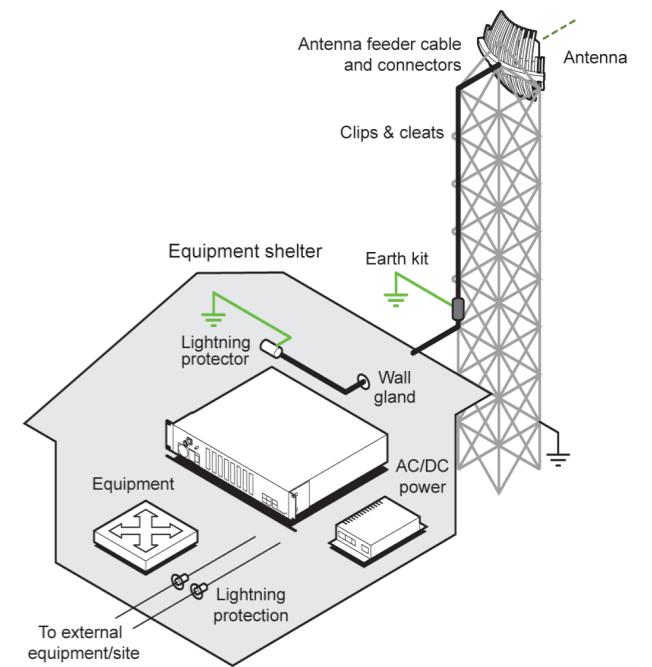
# 4. Apply power to the radio terminals

1. Connect the external power supply to the radio terminal using the terminated power cable as illustrated below.



2. For DC power supplies, switch on the external power supply. For AC power supplies, turn the radio power switch on.

4. Confirm that your antenna, feeder cable, weatherproofing, earthing and lightning protection are correctly installed.



5. Connect the flexible coaxial jumper cable between the lightning protector and radio antenna connector.

